

# Anesthesiology



# ELASTOMER SYSTEM WITH SILICONE BALLOON FOR DRUGS INFUSION (ANTIBIOT)



## VESSEL FUSER , Continuous Infuser

Prod. No	Flow Rate	Infusion Time	Max. Fill Volume
31N-0105	0.5ml/hr	8 days	100ml
31N-0110	1.0ml/hr	4 days	
31N-0120	2.0ml/hr	2 days	
31N-0140	4.0ml/hr	1 day	
31N-0105B	0.5ml/hr	5 days	60ml
31N-0110B	1.0ml/hr	2.5 days	

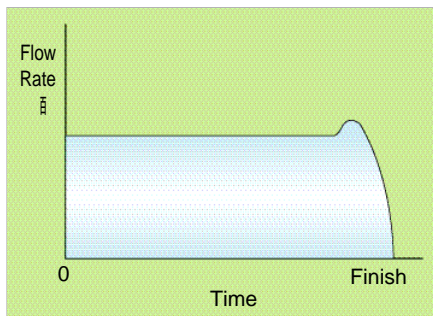
## VESSEL FUSER , P.C.A Infuser

● Max. Fill Volume : 100ML (A Type)

Prod. No	Basal Rate	Bolus Rate/Lockout Time
38PN-1505A	0.5ml/hr	0.5ml / 15min
38PN-1510A	1.0ml/hr	
38PN-1520A	2.0ml/hr	
38PN-6005A	0.5ml/hr	0.5ml / 60min
38PN-6010A	1.0ml/hr	
38PN-6020A	2.0ml/hr	

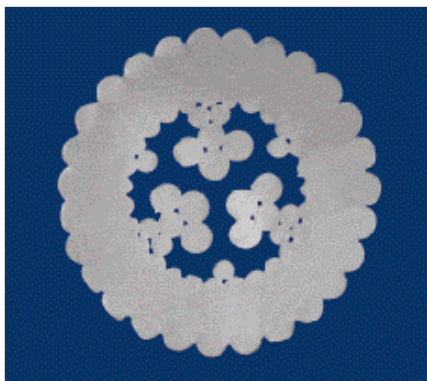
● Max. Fill Volume : 60ML (B Type)

Prod. No	Basal Rate	Bolus Rate/Lockout Time
38PN-1505B	0.5ml/hr	0.5ml / 15min
38PN-1510B	1.0ml/hr	
38PN-1520B	2.0ml/hr	
38PN-6005B	0.5ml/hr	0.5ml / 60min
38PN-6010B	1.0ml/hr	
38PN-6020B	2.0ml/hr	



Flow Rate Chart

## The shape of medication demand button



Cross sectional view of the lumen



PCA reservoir, Empty



PCA reservoir, Filled with drug

# ESTHETICS, CHEMOTHERAPEUTICS)



## VESSEL FUSER , Large Volume Infuser

- Max. Fill Volume : 300ML

Prod. No	Flow Rate	Infusion Time
39LV-3015	1.5ml/hr	200 hr (8 days)
39LV-3020	2.0ml/hr	150 hr (6 days)
39LV-3050	5.0ml/hr	60 hr (2.5 days)
39LV-3080	8.0ml/hr	37 hr (1.5 days)
39LV-30100	10.0ml/hr	30 hr (1.2 days)

- Max. Fill Volume : 500ML

Prod. No	Flow Rate	Infusion Time
39LV-5015	1.5ml/hr	330 hr (13 days)
39LV-5020	2.0ml/hr	250 hr (10 days)
39LV-5050	5.0ml/hr	100 hr (4 days)
39LV-5080	8.0ml/hr	62 hr (2.5 days)
39LV-50100	10.0ml/hr	50 hr (2 days)



## Endotracheal Tubes, Silicone, High Volume Low Pressure Cuff

Prod. No	I.D mm	O.D mm	Fr
1511-50	5.0	7.3	22
1511-55	5.5	8.0	24
1511-60	6.0	8.7	26
1511-65	6.5	9.3	28
1511-70	7.0	10.0	30
1511-75	7.5	10.6	32
1511-80	8.0	11.2	34
1511-85	8.5	11.7	35
1511-90	9.0	12.3	37
1511-95	9.5	13.0	39
1511-100	10.0	13.7	41

## Endotracheal Tubes, Silicone, Without Cuff

Prod. No	I.D mm	O.D mm	Fr
1512-30	3.0	5.0	15
1512-35	3.5	5.6	17
1512-40	4.0	6.1	18
1512-45	4.5	6.7	20
1512-50	5.0	7.3	22
1512-55	5.5	8.0	24
1512-60	6.0	8.7	26
1512-65	6.5	9.3	28
1512-70	7.0	10.0	30
1512-75	7.5	10.6	32
1512-80	8.0	11.2	34
1512-85	8.5	11.7	35
1512-90	9.0	12.3	37
1512-95	9.5	13.0	39
1512-100	10.0	13.7	41

# SLIP COATED INSIDE WALL HELPS EASY INSERTION OF SUCTION CATHETER



**Wire-Reinforced Endotracheal Tubes,  
Silicone, High Volume Low Pressure Cuff**

Prod. No	I.D mm	O.D mm	Fr
1521-25	2.5	4.5	14
1521-30	3.0	5.0	15
1521-35	3.5	5.6	17
1521-40	4.0	6.1	18
1521-45	4.5	6.7	20
1521-50	5.0	7.3	22
1521-55	5.5	8.0	24
1521-60	6.0	8.7	26
1521-65	6.5	9.3	28
1521-70	7.0	10.0	30
1521-75	7.5	10.6	32
1521-80	8.0	11.2	34
1521-85	8.5	11.7	35
1521-90	9.0	12.3	37
1521-95	9.5	13.0	39
1521-100	10.0	13.7	41

**Wire-Reinforced Endotracheal Tubes,  
Silicone, Without Cuff**

Prod. No	I.D mm	O.D mm	Fr
1522-25	2.5	4.5	14
1522-30	3.0	5.0	15
1522-35	3.5	5.6	17
1522-40	4.0	6.1	18
1522-45	4.5	6.7	20
1522-50	5.0	7.3	22
1522-55	5.5	8.0	24
1522-60	6.0	8.7	26
1522-65	6.5	9.3	28
1522-70	7.0	10.0	30
1522-75	7.5	10.6	32
1522-80	8.0	11.2	34
1522-85	8.5	11.7	35
1522-90	9.0	12.3	37
1522-95	9.5	13.0	39
1522-100	10.0	13.7	41

All wire-reinforced endotracheal tubes are supplied with stylet.



The integral stainless steel reinforcing wire provides a safe, kink resistant airway regardless of head and neck position.



High volume, low pressure cuff  
Soft, low trauma tip



### Tracheostomy Tubes, Silicone, High Volume Low Pressure Cuff

- Preformed Type Cuff

Prod. No	I.D mm	O.D mm	Fr
1302-50 PR	5.0	7.3	22
1302-55 PR	5.5	8.0	24
1302-60 PR	6.0	8.7	26
1302-65 PR	6.5	9.3	28
1302-70 PR	7.0	10.0	30
1302-75 PR	7.5	10.6	32
1302-80 PR	8.0	11.2	34
1302-85 PR	8.5	11.7	35
1302-90 PR	9.0	12.3	37
1302-95 PR	9.5	13.0	39
1302-100 PR	10.0	13.7	41



### Tracheostomy Tubes, Silicone, With Cuff

- Plain Type Cuff

Prod. No	I.D mm	O.D mm	Fr
1303-50 PL	5.0	7.3	22
1303-55 PL	5.5	8.0	24
1303-60 PL	6.0	8.7	26
1303-65 PL	6.5	9.3	28
1303-70 PL	7.0	10.0	30
1303-75 PL	7.5	10.6	32
1303-80 PL	8.0	11.2	34
1303-85 PL	8.5	11.7	35
1303-90 PL	9.0	12.3	37
1303-95 PL	9.5	13.0	39
1303-100 PL	10.0	13.7	41



High Volume, Low pressure cuff minimizes mucosal trauma and provides good sealing.



The tube sizes are clearly marked on the wings. Standard connector (15mm) securely fits all anesthetic and respiratory equipment.



**Tracheostomy Tubes, Silicone, Without Cuff**

Prod. No	I.D mm	O.D mm	Fr
1304-30U	3.0	5.0	15
1304-35U	3.5	5.6	17
1304-40U	4.0	6.1	18
1304-45U	4.5	6.6	20
1304-50U	5.0	7.3	22
1304-55U	5.5	8.0	24
1304-60U	6.0	8.7	26
1304-65U	6.5	9.3	28
1304-70U	7.0	10.0	30
1304-75U	7.5	10.6	32
1304-80U	8.0	11.2	34
1304-85U	8.5	11.7	35
1304-90U	9.0	12.3	37
1304-95U	9.5	13.0	39
1304-100U	10.0	13.7	41



**Tracheostomy Tubes, Silicone, Vocalize Type, High Volume Low Pressure Cuff**

Prod. No	I.D mm	O.D mm	Fr
1301-50ST	5.0	7.3	22
1301-60ST	6.0	8.7	26
1301-70ST	7.0	10.0	30
1301-75ST	7.5	10.6	32
1301-80ST	8.0	11.2	34
1301-85ST	8.5	11.7	35
1301-90ST	9.0	12.3	37



Vocalize tracheostomy tube has been developed to help patient to communicate with doctors or their family.

Flow of gas (Air or O<sub>2</sub>) through the speaking line will allow vocalization.

In addition, secretion staying in upper side of cuff, can be suctioned with syringe.